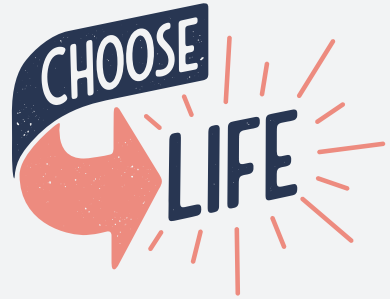


MELBOURNE CHRISTADELPHIAN FAMILY CONFERENCE JAN 9-15, 2022



Dear Brothers, Sisters and Young People,

The 2022 Melbourne Family Conference is now less than 8 months away and our teams are working hard to create a really exciting and uplifting program for young and old alike!

After many of us spent a significant amount of time last year confined to our homes in lockdown, joining virtual ecclesial events and being unable to catch up with friends and family, we're really excited to be able to re-connect and experience conference together, in person!

God Bless,
The Conference Committee
(PS. Don't forget to register!)

Have you registered?

Register now at
www.melbourne2022.com!
or scan the QR code here.



A \$50 deposit is required to secure you/your families spot at the conference.

Hard copy registration forms are also available from your ecclesia's Recorder/Secretary.

fees

Adults \$100 per person

Seniors/Students (18+)
\$80 per person

Children (under 18)
\$50 per person

Family's with fees totalling over \$350 are eligible for a discounted conference rate, capped at \$350.

Conference Theme

I call heaven and earth to witness against you today, that I have set before you life and death, blessing and curse. Therefore **choose life**, that you and your offspring may live,
DEUTERONOMY 30V19

Moses' words are simple - Choose life; Choose life that you may live. It is a decision that must be made over and over again. Not every day is quite so momentous as that day Moses spoke to his people. For us, we are still waiting to enter into that promised land; into God's rest. But day by day each choice, each thought, each interaction is a journey towards our destination, holding on to our God because 'He is our life'.

It can be hard to always have at the forefront of our minds the need to be consciously and carefully making choices that drive us in the right direction. And so our appeal to you is to take some time out together to reaffirm our resolve to 'choose life' in all aspects of our lives.

We made contact with our speakers to get an update on how the Brothers and Sisters are going in their respective countries. You can find more about our speakers and study topics by visiting www.melbourne2022.com/speakers



**BRO ANDREW AND
SIS SUE BRAMHILL
STRATFORD-UPON-
AVON ECCLESIA
UNITED KINGDOM**

At last it is possible to report an improving situation regarding COVID. An energetic vaccination programme, starting with the most vulnerable, means more than 50% of the population has received a first dose, and 25% a second dose. As a result the daily number of new cases and deaths falls, and restrictions are being slowly eased. A good number of ecclesia's are meeting physically in their own halls once again (under restrictive conditions, such as mask wearing, no singing and strict social distancing). COVID has affected our care homes significantly and a number of elderly brothers and sisters have been lost to the infection. Travel around the UK is getting easier. Foreign travel is still not permitted except in exceptional circumstances. Sue and I are still hopeful of travelling to the conference, as we would love to spend time with you all.

Greetings to you all in Oz from the USA. Although COVID hit the USA pretty hard over the last year, thankfully God has kept most brothers and sisters COVID free and of those who did get the virus, most have already recovered. The USA is large geographically, and you will find the COVID stories differ depending on where you live. We are very grateful to our Heavenly Father that our family of 6 children and 6 grandchildren did not get COVID, and now all the adults in our family have been fully vaccinated. We stayed pretty isolated over the last year, attending Bible class and memorial meeting on Zoom, and teaching classes at our Heritage school on Zoom as well. Our area of California has done so well with social distancing, masks and vaccines to lower the incidence of COVID, that we are now allowed to attend our ecclesial hall! Much love to you all in our Lord Jesus,
Jim and Sue Styles



**BRO JIM AND
SIS SUE STYLES
SIMI HILLS ECCLESIA
UNITED STATES**

Conference Venue

Tintern Grammar is located in Ringwood East, a leafy outer eastern suburb of Melbourne, approximately 35 mins drive from the heart of Melbourne.

The school is set on 40 acres of beautiful tree-lined grounds with magnificent sporting fields, swimming pool, gymnasium and even it's own working farm. It has an expansive multi-purpose auditorium as well as plenty of break-out rooms and facilities for the broad range of activities we are planning for the conference.



Things to do in Melbourne

Whether you are visiting Melbourne for the first time or fifth time, there is always plenty to do and see. Many of Melbourne's most popular tourist areas are located within a short distance of Tintern Grammar.

Melbourne CBD: 35 minute drive (approx.)

Explore Melbourne's famous laneways and coffee culture, as well as our expansive range of galleries, museums, restaurants, the aquarium and more!

Yarra Valley: 25 – 45 minute drive (approx.)

Healesville Sanctuary, Chocolaterie, Restaurants, Wineries.

Mount Dandenong: 25 minute drive (approx.)

Panoramic views over the Dandenong Ranges and greater Melbourne to the bays. Beautiful gardens, walks through the rainforest, peaceful picnic spots & quaint shops.

Mornington Peninsula: 60 minute drive (approx.)

Enjoy some of Melbourne's most popular beaches. Swim with the dolphins, scuba dive or relax at the world renowned Peninsula Hot Springs. Ride, slide, zip or wander through adventure gardens and beautiful landscapes.



feature cafe

We love a good café here in Melbourne. Allow us to share one of our favourites with you!

Hatter and the Hare is an Alice-in-Wonderland inspired 160 seat café, located only 5 minutes drive from Tintern Grammar. This whimsical cafe has a very impressive range of sweet treats as well as an extensive food and specially crafted drink menu.

Top Tip: Definitely save room for dessert. Or just go straight for the sweets!

COVID/CANCELLATION POLICY

With COVID still wreaking havoc across the world, we understand that many of you may have some questions about how it may impact the conference.

In the event that our international speakers are unable to travel to Australia for the conference due to prolonged international border closures, our committee will execute our back-up plan and local speakers will be announced.

If we are unable to hold Melbourne Family Conference in January 2022 due to COVID restrictions or government directions, we will offer a full refund to all conference attendees.

We encourage anyone booking travel/accommodation to consider taking out travel insurance and to carefully review any cancellation/refund policies before booking.

Got questions about anything conference related? Contact us on our socials or send us an email! We'd love to help you! info@melbourne2022.com